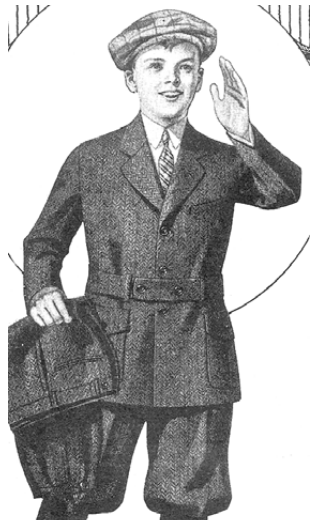


What to Wear to the Première?

by Marion Kelch

A première is a special occasion celebrating the first screening of a film. It brings to mind movie stars and celebrities, arriving in their limousines and stepping out in their finest gowns and jewels. Often the styles of costumes pertain to the theme of the movie being premiered. For example, those attending the premiere of the film "Dr. Zhivago" would wear costumes in Russian style.

Just next month (Saturday, May 5) will be



... don't fuss. Simply dress up like you would for a special occasion such as a graduation, church service, or to attend a wedding

their knees to draw attention to them.

Technically, the Flapper fashion was from 1925 until 1928 but the image of these vibrant women in bobbed hair and short skirts lives on in the conscience of the Roaring Twenties.

The popularity of the Charleston required shoes to be securely fashioned and to have a low heel.

Accessories included long thin scarves or sashes tied around the hips and worn to the side. A long single strand of faux-pearls was common.

Men's fashions at the early part of the 1920s included the "Sacque" suit, worn with colored shirts, ties with small patterns, and black bowler hats. Two-tone shoes were very popular. Men's pants are a most interesting aspect of fashion during this era. Knickers, also known as knickerbockers, were seen in casual wear.

Mid-decade saw the rise of the baggy pant some as wide as 40 inches around.

Jazz fashion also had a period of popularity and men's jazz suits were close fitting and tight waisted with tight skinny pants.

Fashions of the 1930s

The stock market crash of 1929 and the following years of the Great Depression and Dust Bowl certainly impacted the fashion world. For the majority of North Americans the focus turned away from new clothing to that of reusing

and remaking the clothes one already owned. On the drought stricken Prairies, many dresses were creatively sewn from flour sacks. Some people did not even have shoes to wear.

For those lucky few who still had money, the shape of the fashions for both men and women was long and sleek. Muted and deep hues were popular as were abstract and geometric prints.

For women, hemlines dropped to the ankle and waists returned to the natural waistline from the dropped waist popular in the Twenties. Necklines dropped and were accented with scallops or

ruffles.

Men's suits were often double-breasted and trousers were long and full. Dark fabrics were most common but there were accents of herringbone or vertical stripes.

So what to wear to the Provost première?

If you happen to own or to find a vintage 20s or 30s outfit to wear that would be great.

If not, don't fuss.

Simply dress up like you would for a special occasion such as a graduation, church service, or to attend a wedding.

Most important: Be there to enjoy the film, the food, and above all, to meet former area resident Pete Friesen.



the first time Provost has ever held a film première and certainly a Canadian première. It is suggested that the fashions could represent the era when Pete Friesen resided in the Rosenheim district, which was from 1925-1934.

Fashions of the 1920s

In the 1920s the newly developed movie industry influenced the fashions of women with its glitz and glamour and many women wanted to dress like movie stars.

The feeling of liberation that characterized the 1920s, women having won the right to vote in some parts of the world, affected fashions.

During the early '20s women's waistlines began to drop, first to just below the natural waistline and then eventually to the hips. The "shift" dress was popular and most dresses had completely straight bodices.

At first the hems were long, and then gradually rose to the knee by the end of the decade. Many young 'flappers' were anxious to show off their knees, which was forbidden until this time. Some rolled down their stockings and put rouge on

UPCOMING PATTON AUCTION SALE

CACTUS LAKE, SK

SATURDAY, APRIL 21

FARM AUCTION

for Dennis and Monica Erker

SALE LOCATED:

2 miles North of Cactus Lake on Highway 317
OR 8 miles South of Primate on Highway 317

TIME: 10:00 a.m. • TERMS: CASH OR CHEQUE

TRACTORS: 1984 Versatile 875 Series III 4WD, 4 sets hydraulics, differential lock, air seeder return line, only 4427 hours, new inside front tires; 1987 JD 2355 tractor, 3 pt. hitch, 540 PTO, 2 sets hydraulics, roll bar, c/w JD 146 FEL, Joy stick controls, grapple fork, only 1587 hours; 1980 JD 1840, 3 pt. hitch, 4404 hours, 540-1000 PTO, Roll bar Canopy, 2 sets hydraulics c/w 146 JD FEL, new rubber front and rear; 1980 IHC 1486 tractor, 3 sets hydraulics, 540-1000 PTO, approx. 7000 hours. **JD COLLECTOR TRACTORS AND COMBINE:** 1939 JD Model H Tricycle tractor, 8x32 tires, restored s/n 8137; 1941 JD AR Unstyled, 13x24 tires, restored s/n 260147; 6 ft. JD Clipper Combine c/w motor, restored. **MACHINERY:** 35 ft. JD Air Seeder, 1996 735 Cultivator 7-1/2 in. spacings, new knock-on shovels, tine harrows c/w 1995 787 JD tank, fill auger, hydraulic, drive fan, rear hitch; 41 ft. JD 1610 cultivator c/w tine harrows, Honey Bee dead rod, new shovels; 56 ft. Renn Vertic Model 3605 Sprayer, 800 gal poly tank, hydraulic pump, hydraulic booms, disc markers; 44 ft. Laurier harrow packer bar, tine harrows, P20 packers; 12 ft. MF deep tillage cultivator. **TRUCKS AND TRAILERS:** 1979 Ford F600 grain truck, 370-2V, 5 and 2, 15 ft. steel box and hoist, Rollover tarp, only 70,648 km; 1976 Ford F250 Supercab Ranger XLT 460, Automatic, shedded, in mint condition, 39,074 original miles; 1994 SWS 18 ft. car hauler trailer, tandem axle, 15 in. tires, slide-in ramps; 1988 Road King 12 ft. stock trailer, tandem axle, divider gate, rubber mats. **HARVESTING AND HAYING:** 1984 JD 7721 PTO combine, 212 header, 6 belt JD pickup, 2 speed cylinder, spreaders, grain loss monitor, new 12 ply tires, always shedded; 1982 JD 6601 PTO combine, JD belt pickup, has always been shedded and in excellent condition; 1996 25 ft. Case IH 8220 PTO swather, 1000 PTO, new sickle sections, shedded; 1987 JD 430 round baler, 540 PTO, hydraulic pickup, automatic tie, new tires, shedded. **LIVESTOCK EQUIPMENT:** Flexicoil Trailer type post pounder - fully hydraulic c/w post carrier; 500 bus. Portable Miami creep feeder; Approx. 80 assorted corral panels; 2 - 24 ft. free standing corral panels; HiHog Maternity Pen; 18 in. Renn McCoy trailer mounted roller mill c/w discharge auger and electric fill auger; Assorted feed troughs. **AUGERS AND SEED TANK:** HD 10-1800 Sakundiak MD Swing Away auger - shedded; 7x41 Sakundiak; 16 ft. Lode King 2 hopper seed tank c/w hydraulic drill fills and stand. **3 PT HITCH EQUIPMENT:** 5 ft. Wood Dixie cutter Rotary mower; 3 pt. hitch PTO post hole auger; Fimco 3 pt. hitch yard sprayer, 55 gal tank, 10 ft. boom pto pump; 4 wheel Vicon 3 pt. hitch side delivery rake; 7 ft. IHC Model 80 3 pt hitch snow blower - 2 stage. **ANTIQUE AND COLLECTIBLES:** Large collection of Antique wrenches in good condition; IHC Harvester 4 wheel wagon c/w partial 3 deck box and hardware; 1 horse garden cultivator, School Desk; Crocks; Wash tubs; Singer Treadle Sewing Machine; Cream can. **BINS. SHOP. TANKS. SHOP. YARD. HOUSEHOLD.**

For further information contact
Dennis at 306-358-4215 or Delmer at 306-838-4356 or
visit us on line at www.auctionsales.ca

SALE MANAGED AND CONDUCTED BY

Patton Auctions
of Major, SK

Phone: 306-838-4356

or visit us on line at

www.auctionsales.ca

Sask. Lic. #914527 • Alta. Lic. #190527

SEE YOU SALE DAY - DEL

Your
Ticket



to the
Canadian
Première!

The evening of May 5 could be one of the most interesting social events of the year in the area—and local organizers Marion Kelch, Irene Johnstone, Ruth and Rich Holmes think all 650 special tickets (actual size: one foot tall as shown here) may very well sell out before the event.

Reserve your place now for this Canadian Première in our community for only \$25 from any of the above, Louise Schug or

- The Provost News • All Jazz'd Up
- Dick's Studio • Larson's Hardware.

More information at provostnews.ca

This message brought to you by

THE PROVOST NEWS

Serving your community since 1910