

Chamber Members, Town Hear About Private Road Problem—Again

Members of the Provost and District Chamber of Commerce heard that talks are on-going about the condition of a private road in town.

Member Randy Gregory had recently asked the chamber to enquire about rectifying the condition of a Canadian Pacific Railway road and a letter of reply was read at the meeting on Wednesday, September 25.

The town's letter read in part: "... that the Town of Provost has been in contact with Canadian Pacific Railway and the CPR leasees regarding the condition of the above named road. The road is on private property that is owned by CPR and although CPR recognizes that the road is in bad repair they have no plans for any maintenance on the road. The Town continues to work with CPR and the leasees to try to find a solution."

Gregory has since spoken to the town administrator, Judy Larson and Mayor Ken Knox about the issue

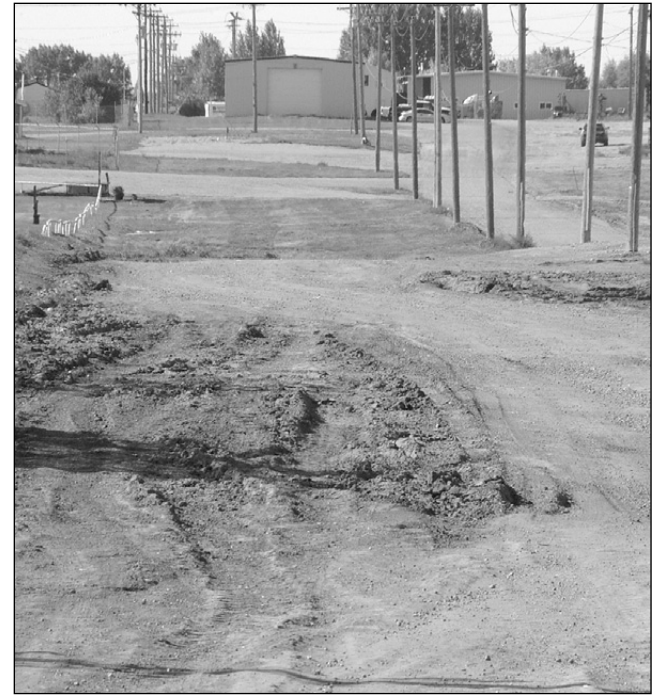
and they told him they will keep working on the problem.

In May, 2007 a farmers' truck using the road was carrying 12 tons of fertilizer and it sunk down and needed a large four wheel drive tractor to pull it out (see *PN* May 23, 2007). Other vehicles have also become stuck near the east end of the road over the years.

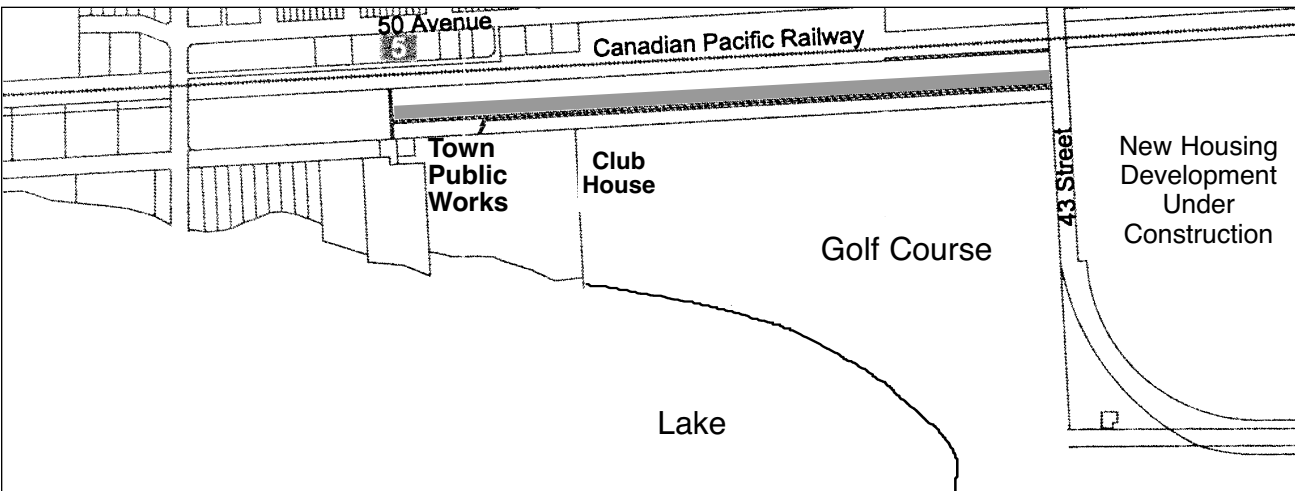
Taxes for that stretch of land (see map) are sent to the Canadian Pacific Railway for payment.

The issue of maintaining the road has plagued town council for decades and when the road is wet it can become impassable because of water and mud.

The Town of Provost can not legally be on that road because it is privately held. The town has been discouraged by the owner from maintaining that road at the town's cost over the decades, even when grain trucks were using it to haul crops to the elevators that



A private road being used by the public in town—but little to no maintenance is taking place. ©PROVOST NEWS PHOTO.



The shaded line shows the area of road that is on land not owned by the Town of Provost.

used to be there. There are still two private firms nearby that rely on the use of the road for its own staff and customers on a daily basis. People going to the local golf club also use the road.

Over the years and with different town council administrations, town graders have done some maintaining of the road, including snow plowing but the Town of Provost has been told in the past by the owners the town is not even to cut grass or weeds along the CPR property.

The issue of the maintenance of the road was also discussed by the Provost and District Chamber of Commerce three years ago.

✂ CLIP & SAVE ✂

PROVOST & DISTRICT GOLF CLUB

— 780-753-6478 —

LUNCH

~ 11 A.M. TO 2 P.M. ~
MONDAY TO FRIDAY

NEW MENU:
Soup & Sandwich Special!
WEDNESDAY & FRIDAY

Phone in orders available!

DART LEAGUE

Monday and Thursday
EVENINGS

~ 7 p.m. ~
Starting October 16.
Phone to register.

Join us for ...

- Lunch!
- Darts!
- Christmas Parties!
- or
- Business Meetings!

...at one of the most scenic locations in Town!

Now taking
CHRISTMAS BOOKINGS
starting
November 14

- ☆ Dine!
- ☆ Dance!
- ☆ Games!

Get the Job Done

with a

STIHL Chain Saw

BUILT TO LAST
\$249.95⁺
with 15"/16" bar
MS 170 Gas Chain Saw
30.1 cc / 1.3 kW

Plus

RECEIVE A **FREE* WOOD-PRO™ KIT**
AN \$85 VALUE!

FREE Woodsman® Carrying Case

FREE STIHL® TIMBERSPORTS® Hat

FREE OILOMATIC® Chain Loop

FREE Chain Saw Operation and Maintenance DVD

Ask our friendly staff for more product information or a free demonstration.	<table border="0"> <tr><td>MS 250 Chain Saw</td><td>\$429⁹⁵†</td></tr> <tr><td>MS 290 Chain Saw</td><td>\$449⁹⁵†</td></tr> <tr><td>MS 270 Chain Saw</td><td>\$499⁹⁵†</td></tr> <tr><td>MS 260 Chain Saw</td><td>\$599⁹⁵†</td></tr> <tr><td>MS 361 Chain Saw</td><td>\$699⁹⁵†</td></tr> </table>	MS 250 Chain Saw	\$429 ⁹⁵ †	MS 290 Chain Saw	\$449 ⁹⁵ †	MS 270 Chain Saw	\$499 ⁹⁵ †	MS 260 Chain Saw	\$599 ⁹⁵ †	MS 361 Chain Saw	\$699 ⁹⁵ †	<div style="text-align: center;"> <p>STIHL® Easy2Start</p> <p>The Easy2Start™ system reduces the pulling force required to start an engine by 50 percent!</p> </div> <table border="0"> <tr><td>MS 180 C-BE Chain Saw</td><td>\$329⁹⁵†</td></tr> <tr><td>MS 250 C-BE Chain Saw</td><td>\$479⁹⁵†</td></tr> </table>	MS 180 C-BE Chain Saw	\$329 ⁹⁵ †	MS 250 C-BE Chain Saw	\$479 ⁹⁵ †
MS 250 Chain Saw	\$429 ⁹⁵ †															
MS 290 Chain Saw	\$449 ⁹⁵ †															
MS 270 Chain Saw	\$499 ⁹⁵ †															
MS 260 Chain Saw	\$599 ⁹⁵ †															
MS 361 Chain Saw	\$699 ⁹⁵ †															
MS 180 C-BE Chain Saw	\$329 ⁹⁵ †															
MS 250 C-BE Chain Saw	\$479 ⁹⁵ †															

* Don't miss your chance to get your own Wood-Pro™ Kit. Simply purchase any qualifying chain saw between now and November 30th, 2008 and you will receive a STIHL Wood-Pro™ Kit FREE. This kit includes a Woodsman® Carrying Case, STIHL® golf cap, replacement loop of OILOMATIC® chain and a Chain Saw Operation and Maintenance DVD - an \$85 value!
† Limited time offer. Prices do not include HST, PST, GST, DST, where applicable. Feature prices are in effect until November 30th, 2008 at participating Dealers. Wood-Pro™ Kit offer applies to purchases of new chain saws, and is valid until November 30th, 2008, while supplies last.

STIHL has over 900 authorized, servicing Dealers across Canada - drop in and see your local Dealer today!

Western Rentals & Sales

(780) 753-2759
HWY. 13, PROVOST, ALTA.

www.christenbros.com

www.stihl.ca